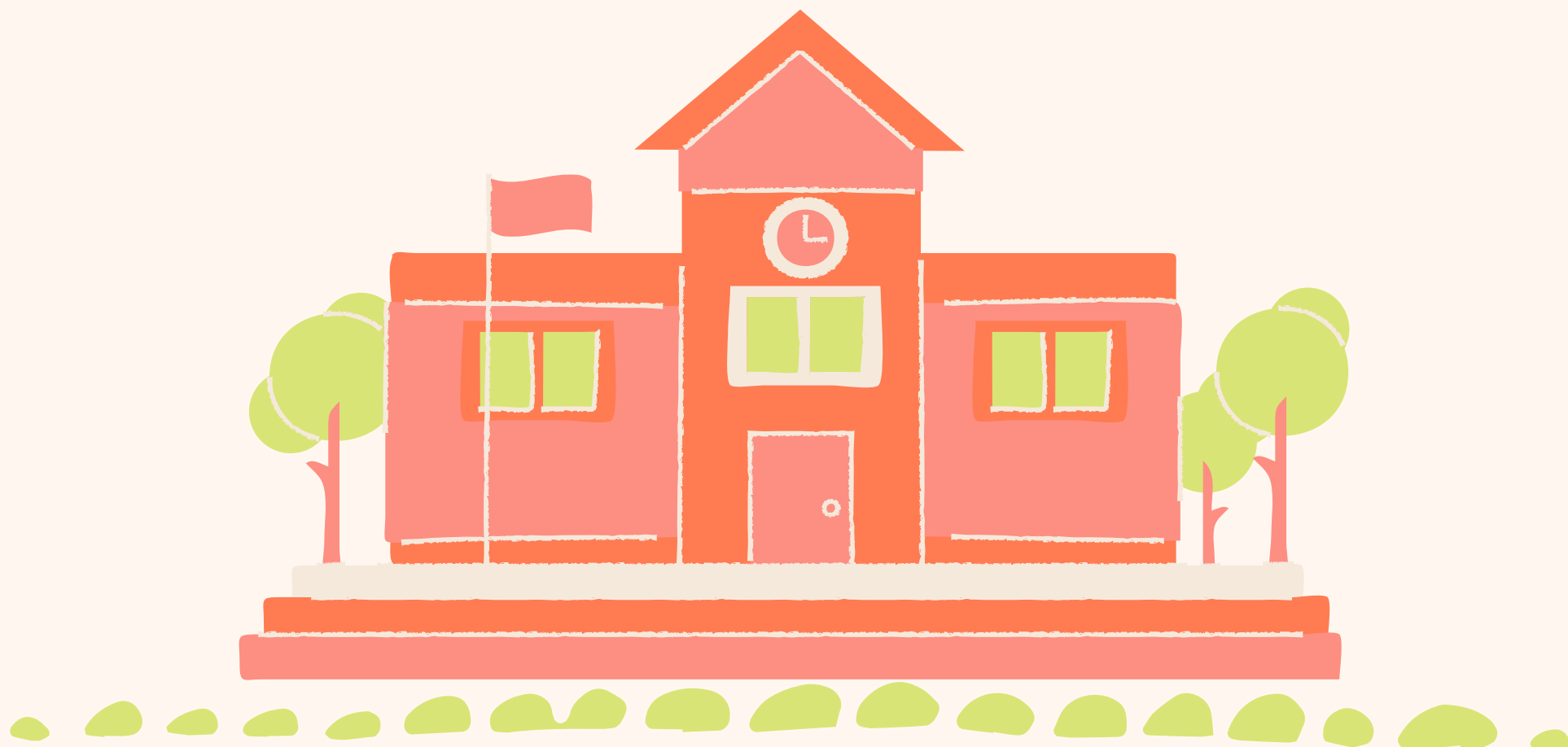


CHARLOTTE PUBLIC SCHOOLS

QUARANTINE & ISOLATION GUIDELINES



Please work with school administration to determine quarantine requirements if you or your child are a close contact or test positive for COVID-19. If you/your child is fully vaccinated or have had COVID in the past 90 days, please advise our administrative staff when you are notified of a close contact. Proof of the vaccine or positive facility test will be required. All close contact must monitor their symptoms for 10 days from the date of last exposure to a positive individual.

You Have A Confirmed COVID Positive Case	
Day	Action
0	Individual Tests Positive And/Or Begins Experiencing Symptoms
1	Isolate At Home
2	
3	
4	
5	
6	Return to School Wearing a Well-Fitted Mask or Continue to Isolate if Unwilling/Unable to Mask
7	
8	
9	
10	
11	Return to School (Mask Is Optional)

In School Close Contact with Confirmed Positive Individual	
Individuals are fully exempt from quarantine at home if:	
Have had a confirmed positive COVID-19 facility test within the last 90 days.	
AND/OR	
Up-to-date on all recommended COVID-19 vaccines they are eligible for.	
Days 1-10	Remain in school and monitor symptoms while wearing a well-fitted mask.

If the above options do not apply, families have the following options:	
Remain in school and continue to track symptoms closely.	
AND	
Wear a well-fitted mask through Day 10.	
OR	
If you are unable to mask, quarantine at home through Day 10.	

In Home Close Contact with Confirmed Positive Individual	
Individuals are fully exempt from quarantine at home if:	
Have had a confirmed positive COVID-19 facility test within the last 90 days.	
AND/OR	
Up-to-date on all recommended COVID-19 vaccines they are eligible for.	
AND	
They must wear a well-fitted mask if they continue to attend school/extra-curricular activities.	
If not exempt, close contact must:	
Day	Action
0	Individual Tests Positive And/Or Begins Experiencing Symptoms
1	Close contact quarantines at home. Recommended isolation from positive individual and/or wearing a well fitting mask in the home.
2	
3	
4	
5	
6	Recommended continued quarantine at home for close contact.
7	
8	OR
9	Return to school with a negative facility test and must wear well-fitted mask.
10	
11	Return to School Wearing a Well-Fitted Mask or Continue to Isolate if Unwilling/Unable to Mask
12	
13	
14	
15	
16	Return to School (Mask Is Optional)

In all circumstances, if you are unable or unwilling to wear a well-fitted mask at school or during extra-curricular activities you must quarantine at home for the referenced period.

Isolation is used when you are already infected with COVID-19 and have tested positive.

Quarantine is used when you might have been exposed to COVID-19.